

OpenText Tableau Forensic Imager (TX1)

A remarkably versatile and intuitive forensic imaging solution that acquires more data, faster and from more media types, without sacrificing ease-of-use or portability



Broad media support



Simultaneous operations and queuing



Superior local and network imaging performance



Beautiful and intuitive user interface

The increasing diversity, size and sophistication of digital media makes evidence collection a challenge. Digital investigators need a versatile solution that can acquire data from any storage type, including network shares, that is easy to use and navigate and can help close cases faster, reduce case backlogs and increase investigative capacity.

The OpenText Tableau Forensic Imager (TX1) solves the difficult challenges of forensic data acquisition by offering superior local and networked forensic imaging capabilities with no compromises, even when conducting simultaneous forensic jobs. It delivers consistent results, giving examiners and investigators the peace of mind they need when dealing with many types of digital evidence, all within a standalone, high-performance hardware solution.

Broad media support

The TX1 enables full forensic imaging from a wide variety of media, including PCIe, 10Gb Ethernet and Apple® Mac® in Target Disk Mode (USB-C, Thunderbolt and FireWire).

Simultaneous operations and queuing

With the TX1, investigators can expedite cases by conducting two concurrent forensic jobs, anything that involves creating a hash: Logical, Duplicate, Hash, Verify and Restore, and queue additional jobs, without sacrificing performance. Additional scheduled jobs begin as soon as an active job completes.

Superior local and network imaging performance

The industry's first 10 GbE connection forensic imager, the TX1 provides unmatched network imaging performance, with little to no drop in performance when simultaneously hashing, encrypting or imaging multiple drives.

Beautiful and intuitive user interface

The TX1 provides an intuitive, informative and easy-to-use UI, all running on a seven-inch, color touch-screen display. It enables examiners of all skill levels to get the job done fast, with minimal to no training.

The TX1 provides digital investigators with unmatched durability, forensic integrity, advanced imaging and performance, all delivered with an intuitive and flexible user experience.



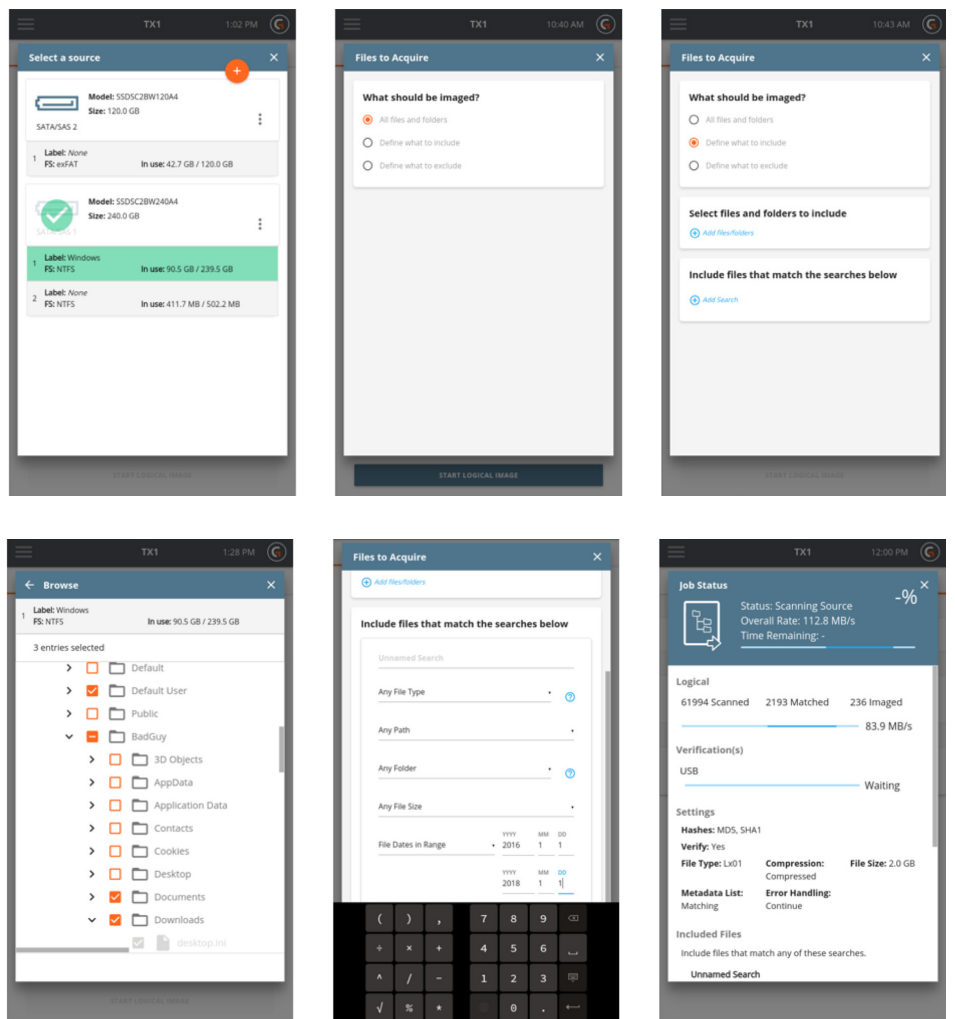
Broad media supported by TX1

Feature	Description
Logical imaging and search	Acquires logical images from locally attached drives and network shares Collects the entire file system or user can manually select specific folders and files, or use the TX1's powerful search capabilities to define a targeted search profile using pre-defined and custom criteria
Detect drives with whole disk encryption	Automatically detects drives encrypted with the following popular encryption types: Microsoft® BitLocker®, BitLocker To Go, Apple FileVault 2, Linux® LUKS, BestCrypt and Symantec™ PGP™ Disk
Comprehensive Apple Target Disk Mode Forensics	Offers several methods to acquire digital evidence from Mac computers in Target Disk Mode over USB-C, FireWire or Thunderbolt (with Apple's FireWire to Thunderbolt adapter) Captures both physical drives (HDD and SSD) configured as one Fusion Drive on iMac® and Mac Mini®
Up to four destinations per source	Supports up to four destinations per source (1:4) with the ability to mix clone/image duplication and local/network destinations (outputs to SATA, USB 3, SAS and network shares)

Restore image to drive	Restores image files created by the TX1 to a full drive, with its original formatting and directory structure
Acquire from and output to network shares	Acquires from and outputs to many types of network shares (NAS, SAN, domain and workstation shares) using CIFS or iSCSI protocols
10 Gigabit Ethernet	Provides superior network imaging performance over a convenient RJ-45 connection, which is backwards compatible with 1GbE networks
Media utility options	Provides the ability to view extensive drive details, wipe, format, manage Tableau-style drive encryption, view and disable HPA/DCO, blank check, browse filesystem, view SMART data, export as iSCSI target for remote access and eject media
Modular destination drive bay	Includes an optional fan-cooled drive bay (TX1-S1), which provides two cable-less connections for 2.5-inch or 3.5-inch SATA/SAS drives, and when it is connected, examiners can employ up to four simultaneous SATA/SAS destinations
Display more USB device descriptors	Displays the following USB descriptors in the USB drive details screen and reports in the forensic log: VID (Vendor ID), PID (Product ID), class, subclass and protocol

TX1 Logical Imaging in action

TX1 Logical Imaging enables users to save valuable time and destination drive capacity requirements, by focusing on specific files of interest rather than acquiring the entire physical drive.



[See the demo](#)

[Keep up to date](#)

[Learn more](#)

Note: TX1 comes with a three year parts and labor warranty.